

Rah Rah

THEATRE COMPANY

A Theatre in Education Company

which specialises in top quality
work related learning shows
and workshops.



Supported using public funding by
**ARTS COUNCIL
ENGLAND**

Contents

RAH RAH THEATRE COMPANY	3
WEX-FACTOR	4
A show that prepares pupils for work experience.	
ENTERPRISE: THE NEXT GENERATION	5
Introduces pupils to the idea of Business and Enterprise.	
WORKSHOPS	6
A collection of fun educational workshops.	
HOW IT WORKS ONLINE	7
CONTACT DETAILS AND HOW TO BOOK	8



The Company was established in 2001 and specialises in work related learning through the medium of theatre in education. So far Rah Rah Theatre Company has taken fifty productions on tour around London and the Home Counties.

We pride ourselves in writing and producing our own original material. Our productions are brought directly into schools or theatres and can be adapted to be performed in any sized area for any size of audience. On average we perform over 250 shows a year and have performed in over 1000 different venues.

RahRah is excited to now offer
all its productions online!

We are pleased to announce Rah Rah has received Arts Council Funding to enable us to transfer our interactive work related learning shows live online for students to participate in. The initial challenge to go online occurred because of COVID19. However we are so pleased with the success of the project that we have decided to continue to offer our shows and workshops online. We are grateful to the Arts Council for enabling us to kick start this new venture.

WEX-FACTOR

🕒 PREPARES PUPILS FOR THEIR WORK EXPERIENCE AND THE WORLD OF WORK

The production comprises a game show with two teams competing against each other. The show has five rounds each highlighting one area of work experience and points are awarded at the end of each round. The areas covered are as follows:



Interview Technique – preparation for an interview including initial telephone conversation with prospective employer.



Employer's Expectations – allows students to gain some insight into what employers expect of students during their work experience placement.



Dress to Impress – helps students with their decision as to what to wear during their placement including appropriate dress, health and safety, and hygiene.



Customer Service – allows the students to identify good and bad customer service which helps them during their work experience placement.



Health and Safety – demonstrates what students need to know about Health and Safety in the work place.

THIS SHOW WAS ORIGINALLY COMMISSIONED BY BRACKNELL COUNCIL IN 2007 AND HAS BEEN PERFORMED IN OVER 500 SCHOOLS.



ENTERPRISE | THE NEXT GENERATION

🕒 INTRODUCES PUPILS TO THE IDEA OF BUSINESS AND ENTERPRISE

The show is an interactive game show in which the pupils compete in various rounds to win key skills needed to be enterprising. They will then use these skills in the final round to meet the Dragons in the Dragon's Den. The show is a fun way to look at Business and Enterprise, what it takes to set up a business and such key skills as ability to plan, confidence, motivation, self-awareness, competitive drive, willing to work hard, willing to learn, perseverance, creativity, willing to assume a risk, and ability to communicate.



THIS SHOW WAS ORIGINALLY COMMISSIONED BY LEWISHAM EDUCATION BUSINESS PARTNERSHIP IN 2010 AND HAS BEEN PERFORMED IN OVER 200 SCHOOLS.

“Tutors and students came up with terms such as “engaging”, “appropriate”, “fun” and “humorous”. As I am sure you appreciate, one never knows what to expect with this sort of activity. I certainly envisage using Rah Rah again next year!”

RICHARD KOCHMAN - SANDHURST SCHOOL

WORKSHOPS

COMMUNICATION



The workshop enhances pupils' communication skills in the workplace and in everyday life. This workshop uses a number of drama games, team building exercises and improvised scenes to look at the following areas: different types of communication, team building, body language, eye contact, listening, tone of voice, non verbal communication, telephone conversations, interview techniques and customer service.

THE COMMUNICATION WORKSHOP WAS ORIGINALLY COMMISSIONED BY LEWISHAM EBP
THE BUSINESS & ENTERPRISE WORKSHOP BY VALENTINES HIGH SCHOOL AND THE NEET WORKSHOP BY CHELSEA EBP



BUSINESS AND ENTERPRISE



Introduces pupils to the idea of business and enterprise. The workshop covers target market, budget, marketing and promotions, locality, and the skills they will need to run a business.

OTHER ZOOM WORKSHOPS

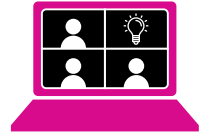


Additional workshops we offer include drama, PE sessions, yoga, improvisation, acting techniques, dance, singing and in a minute to win it challenges. There will be a charge for these custom made workshops.



HOW IT WORKS ONLINE

Shows Our preferred platform to deliver online shows is Zoom. However we are happy to adapt to other platforms when required. The shows will be run by 3 actors and will follow the same format as our live shows. The shows will use a mixture of the actors performing sketches live, quiz questions the students will answer live and also pre-recorded video clips.



Workshops Again, our preferred platform for workshops is Zoom but we are happy to adapt to other platforms when required. The workshop will be run by two of our actors live online and involves lots of interactive activities to involve and engage the students.



Online Safety All our actors are DBS checked. We send out our risk assessments prior to the performance, detailing all the safety provisions we have put in place to make sure students remain safe whilst online.



The students will be sent an online evaluation form to fill in once the show is completed.



"The students had so much fun watching your show online today. The energy of the actors and the live interaction that was incorporated was superb! The online version of the WEX-factor show is just as good as the stage version!" WOOLWICH POLYTECHNIC



RAH RAH RECEIVED ARTS COUNCIL FUNDING TO ENABLE US TO TRANSFER THESE SHOWS AND WORKSHOPS SUCCESSFULLY ONLINE.

HOW TO BOOK

Our in person, live shows are £500 and the workshops are £200.

Our in person, live online shows are £250 and workshops are £200.

Online shows and workshops can be repeated several times in a day with an additional £100 per show or £50 per workshop. (Please note we are a London based company so in person, live shows outside London and the Home Counties will incur extra costs).

For more information or to make a booking please contact us on the details below.

**RAH RAH THEATRE COMPANY
9 HEATH DRIVE | RAYNES PARK
LONDON SW20 9BE**

www.rahamtheatre.com
rahamtheatre@hotmail.com
Telephone: 07944 868 358

 [@RahRahTheatreCo](https://twitter.com/RahRahTheatreCo)
 [RahRahTheatreCompany](https://www.facebook.com/RahRahTheatreCompany)